

PART OF THE N.E. 1/4 OF THE N.W. 1/4, OF SECTION 17, T.5N., R.1W., S.L.B. & M.

HAVEN COVE

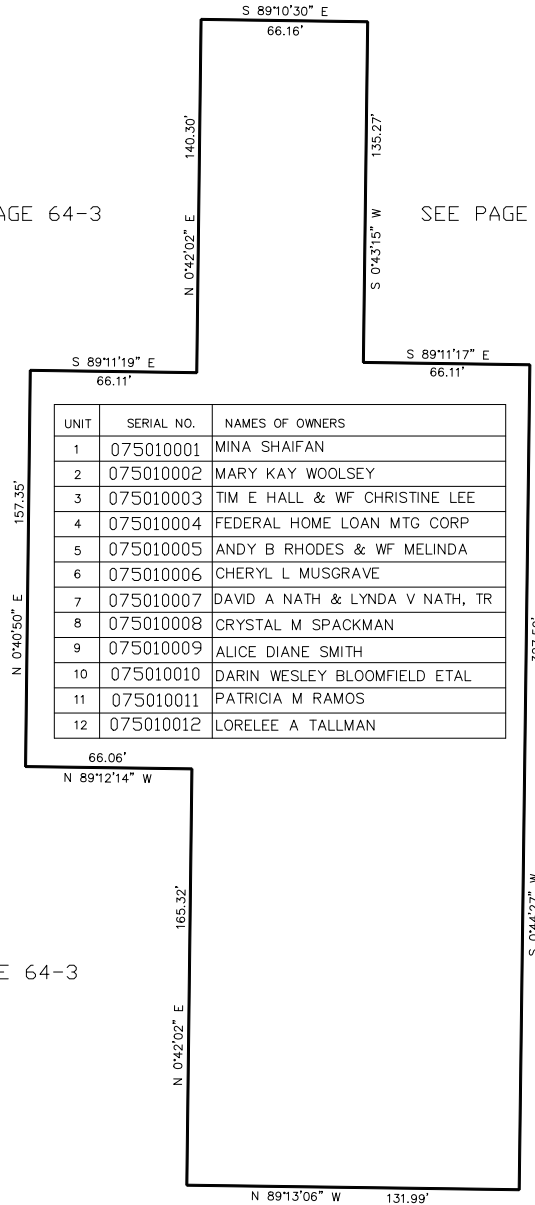
IN WASHINGTON TERRACE CITY

TAXING UNIT: 24

SCALE 1" = 40'

SEE PAGE 64-3

SEE PAGE 64-2



UNIT	SERIAL NO.	NAMES OF OWNERS
1	075010001	MINA SHAIFAN
2	075010002	MARY KAY WOOLSEY
3	075010003	TIM E HALL & WF CHRISTINE LEE
4	075010004	FEDERAL HOME LOAN MTG CORP
5	075010005	ANDY B RHODES & WF MELINDA
6	075010006	CHERYL L MUSGRAVE
7	075010007	DAVID A NATH & LYNDA V NATH, TR
8	075010008	CRYSTAL M SPACKMAN
9	075010009	ALICE DIANE SMITH
10	075010010	DARIN WESLEY BLOOMFIELD ETAL
11	075010011	PATRICIA M RAMOS
12	075010012	LORELEE A TALLMAN

SEE PAGE 64-2

SEE PAGE 64-3

FOR COMPLETE ENG DATA SEE ORIGINAL DEDICATION PLAT IN BOOK 43, PAGE 94 OF RECORDS.